



David Keenleyside <d.keenleyside@gc.ac.nz>

School Newsletter Week 5, Term 2, 2021.

Glenfield College <reception@gc.ac.nz>
Reply-To: Glenfield College <reception@gc.ac.nz>
To: d.keenleyside@gc.ac.nz

3 June 2021 at 15:04

[View this email in your browser](#)



3rd June 2021
[Kaipatiki Road, Glenfield, Auckland, 0629](#)
+64-9-444-9066

Message from the Principal

Pai ake te iti i
te kore rawātu

Little is better than
nothing at all

Kia ora whānau

Earlier this week, I had the good fortune of attending the SPANZ (Secondary Principals Association of New Zealand) Conference in Blenheim. This was an opportunity to connect with other principals and hear from guest speakers such as Dr Ashley Bloomfield, Minister of Education, Chris Hipkins and other keynote speakers. One of the highlights of attending events such as this is that it gives you the opportunity to reflect on your own school and also find out what others are doing.

One of the most positive aspects of this week for me was that it highlighted how Glenfield College is currently in a very good place and moving forward is very exciting. Evidence of this was clearly seen last Friday night at Kaipatiki Sounds where our musicians and choir were superb and performed with absolute pride. To see the 19-strong choir wearing our formal uniform was a very proud moment for me as Principal and I reflected on the fact that only two years ago there were only five members of the choir!

Special thanks goes to Mr Gardner and the teaching staff who gave up their own time to attend the two recent Geography trips to Rotorua. A common phrase we have used many times recently is “opportunities” and there is no doubt these opportunities have created memories that will long outlast the students’ school days.

Participation in sport continues to grow and I have genuinely enjoyed seeing students and whanau supporting their teams on the sidelines throughout the week/weekend. In our current climate of uncertainty with Covid-19, participation and involvement in sport has never been so important in helping with our students’ mental wellbeing.

As we approach the long weekend, we have deliberately put in place a mid-term break. For Years 11 to 13 students, this is almost the halfway point in the academic year. Students should be closely monitoring their credits and be fully focussed on their studies, internal assessments and striving to achieve the best results possible to ensure subject opportunities are available to them in 2022. A friendly reminder to all that the Learning Hub is available on Tuesdays and Thursdays after school in the Library.

Let’s all make the most of the second-half of Term 2 and make the most of the little things.

with Pride & Respect

MA MARUWEHI, KA RAHIRI
PAUL MCKINLEY, PRINCIPAL



Year 9 & 10 Parent/Teacher Meetings



On Wednesday 19 May, parents and caregivers had the opportunity to meet with their teachers and mentors in the Kaipatiki Theatre. This was an opportunity for them to ask questions and raise any concerns about their children. There was a great turnout of parents/caregivers and it was pleasing to see how many students came along for the meetings too.

Ex-Student Graduates with a Bachelor of Commerce Degree



On Tuesday, Amber Henderson graduated from the University of Auckland with a Bachelor of Commerce Degree. Amber is an ex-student of Glenfield College who left the school in 2016. Congratulations from Glenfield College on this wonderful achievement.

Year 11 Geography Trip



On the 23rd & 24th May, 26 Level 1 Geography students went on the annual Geography trip to Rotorua. The students got first-hand experience of the geographic environment of Rotorua. They had a guided tour through the cultural experience at Te Puia and then got to see the Pōhutu Geyser erupt, as well as a visit to the New Zealand Māori Arts and Crafts Institute. Students had a guided tour of the Zorb factory and learned about their sustainable practice. These learning opportunities were then combined with the fun of trying out the Zorb, the Luge and the Gondola. A great lot of learning and fun was had by all students. Click [here](#) to see more photos from the trip.

Pink Shirt Day



On the 21st May at Interval a Bake Sale was held in honour of Pink Shirt Day. There was a great turnout with both students and staff dressing up in bright pink to raise money for this worthy cause. \$480.30 was raised in total. Thank you to everyone that got involved and made this such a huge success. Please click [here](#) to see more photos from the day.

Senior Drama Performance



On the evening of the 26th May we held our annual Drama Performance in the Kaipatiki Theatre. It was

a great success and the turnout of both parents and supporting students was wonderful. Well done to all students who participated and special mention goes to Lex Lawler for organising it and Ms Ogden for all the hard work behind the scenes. Please click [here](#) to view more pictures from the evening.

Kaipatiki Sounds



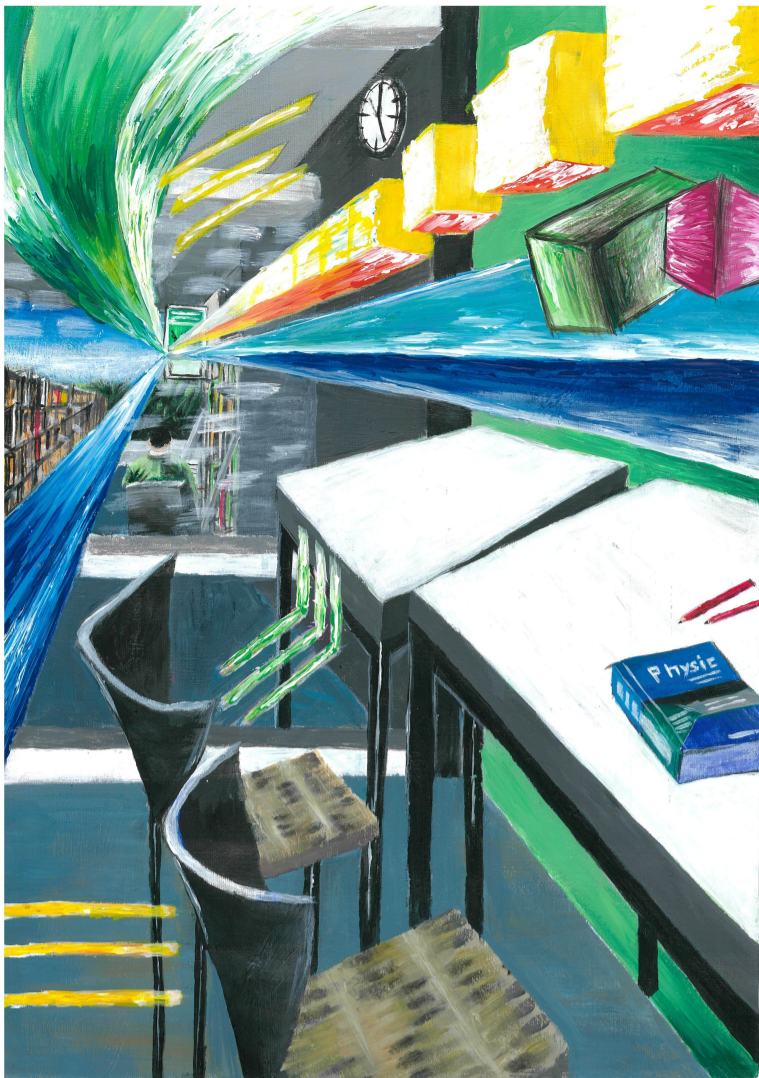
Last Friday evening, students from Glenfield College took part in “Kaipatiki Sounds”. The evening was a huge success with outstanding performances from three local high schools. As a school, we were very proud of our students’ performances. They represented the College superbly. Well done to these students who showed such courage on stage.

Chester Plumbing Donation

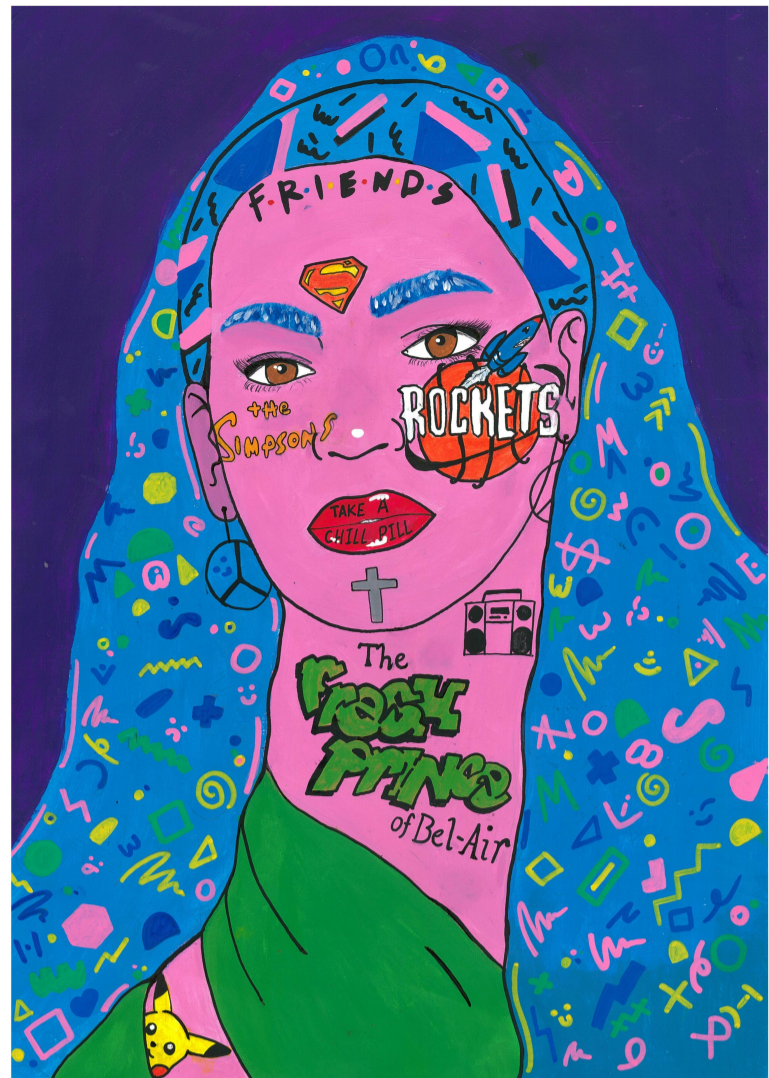


On 27 May Colin Chester kindly donated Hockey sticks, mouthguards, and shin pads to our students. The Hockey sticks which were donated two years ago are still being used today by our 1st XI Boys & Girls. Glenfield College would like to thank Colin for his generosity.

Artwork of the Week



Yuting Liu - Year 13 student



Jade McDonell - Year 11 student

Upcoming Events

Mid-Term Break

4 June

Queen's Birthday

7 June

Teacher Only Day

25 June

End of Term 2

9 July - Early closing 12.30pm

GLENFIELD COLLEGE MARKET DAY

Hosted By
Glenfield Mall



THURSDAY 3RD JUNE
4PM - 6PM
GLENFIELD MALL -
CENTRE COURT
CASH ONLY



UPCOMING EVENTS

Click [here](#) to view
the school calendar



Road Safety After School

The school gates will continue to be closed to traffic at the end of the school day to ensure the safety of the students as they leave. Please continue to arrange to pick them up either further up Kaipatiki Road by the Rugby Club or down by the school netball courts. Please make sure that the road rules are observed and do not park on yellow lines or across the driveways of our local residents.



To follow @glenfieldcollegesport click below



To see the latest sports fixtures click below



FUJI XEROX



New Lunch Menu



EAT SMART

WRAPS+SAMMIES

- Fresh Wraps see selection available from \$4.50
- Sandwiches see selection available from \$3.00
- Filled Rolls see selection available from \$5.00
- Crispy Chicken Roll \$4.00
- Butter Chicken Wrap \$5.50

EAT SMART SALADS

Freshly made Eat Smart salads are available daily.
 Also see the Pasta & Rice category for full list of pasta salads.



BLACKBOARD SPECIALS

New food, special deals and more! Ask our friendly staff at the tuckshop what the Blackboard Special of the day is!



PASTA & RICE



- Pasta Selection hot or cold from \$4.50
- Teriyaki Chicken rice or noodles from \$5.00
- Butter Chicken on rice from \$6.00

THE CLASSICS



- Hash Brown \$1.00
- Chicken Tender \$2.50
- Garlic Bread plain or cheesy from \$2.50
- Wedges \$3.50
- Hot Dog \$4.00
- Cheese Burger \$4.50
- Chicken Burger \$6.00

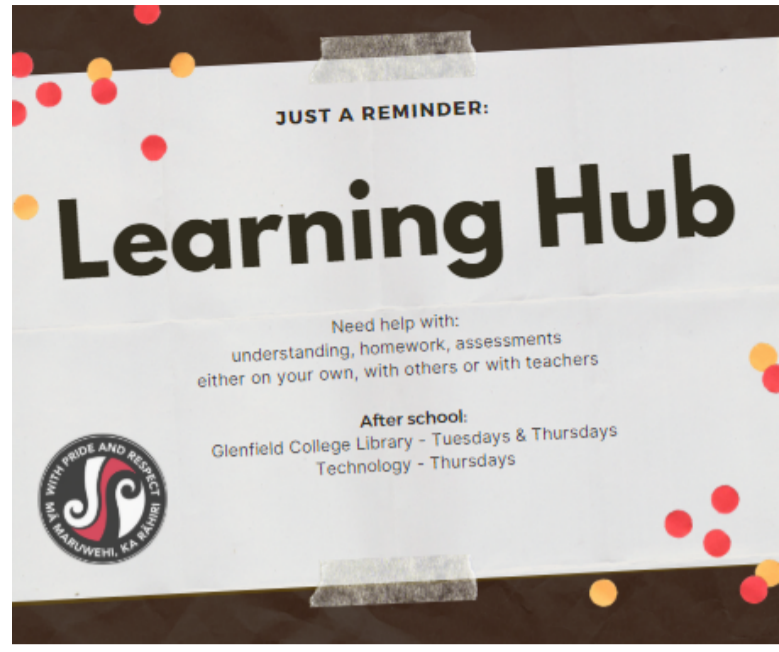
+ more available in-store

FOLLOW US ON FACEBOOK
 FB.COM/CHAMPION TUCKSHOPS



Certified every day foods Vegetarian option available

See the fridges and cabinets at the tuckshop for the full selection available and ask about our gluten free options!



WEARING IS BELIEVING
NZ UNIFORMS

Glenfield College Uniform Available from 'New Zealand Uniforms'

Store: 19A Douglas Alexander Pde, Albany

Phone: 09 477 6300

Email: albany@nzuniforms.com

Store Hours: Weekdays 9am – 5pm, Saturday 9am – 1pm

Web: www.nzuniforms.com

Payment Options:

NZ Uniforms accepts Cash, Eftpos, all major Credit Cards and WINZ payments. We also offer finance through Gilrose Finance, PartPay and have a 'Uniform Club' which is a great way to save for your School Uniform purchases.

'Uniform Club' :

It's easy, set up an account and make automatic payments (weekly, fortnightly or monthly) in advance and watch your balance grow. When you are ready to make your Schoolwear purchases with NZU, your money is already available and waiting to be spent! Call or visit the store today to get started.



AVAILABLE NOW

Lunch Orders

HOW IT WORKS

STEP 1.
GO TO WWW.LUNCHORDERS.CO.NZ

STEP 2.
SIGN UP & PLACE AN ORDER

STEP 3.
YOUR STUDENT'S LUNCH WILL THEN BE MADE FRESH & READY TO BE PICKED UP AT LUNCHTIME!

WWW.LUNCHORDERS.CO.NZ

Copyright © 2021 Glenfield College, All rights reserved.

You are receiving this email because you have a child attending Glenfield College, or you are associated with Glenfield College in some way.

Our mailing address is:

Glenfield College
Kaipatiki Road
Glenfield

Auckland, Auk 0629
New Zealand

[Add us to your address book](#)

Want to change how you receive these emails?
You can [update your preferences](#) or [unsubscribe from this list](#).

