

School Newsletter Week 1, Term 1, 2025

Ellie Newton <e.newton@gc.ac.nz>

31 January 2025 at 15:25

To: staff-all@gc.ac.nz

Cc: year13@gc.ac.nz, year10@gc.ac.nz, year11@gc.ac.nz, year12@gc.ac.nz, year9@gc.ac.nz

Bcc: d.keenleyside@gc.ac.nz

[View this email in your browser](#)



31st January 2025

[Kaipatiki Road, Glenfield, Auckland, 0629](#)

+64-9-444-9066

Message from the Principal

Tēnā koutou, e te whānau o Glenfield College

A warm welcome to the 2025 school year! It is a pleasure to greet our returning students, whānau and staff, as well as extend a special welcome to those who are joining the Glenfield College community for the first time. We are excited to embark on another year of learning, growth and success together.

The first week has been a busy and productive one. Our junior students are settling into their new routines, while our senior students are focused on finalising their academic courses, meeting their teachers and setting ambitious goals for the year ahead. Their enthusiasm and commitment set a positive tone for what promises to be a fantastic year.

Reflecting on 2024, our NCEA results have shown commendable achievements across the senior school. We are incredibly proud of those students who met and exceeded their academic aspirations—ka mau te wehi! These results serve as both a celebration and a reminder that every new year brings fresh opportunities to aim higher, work harder, and achieve even greater success.

Supporting Your Child's Success in 2025

As we begin the new academic year, we encourage parents and caregivers to play an active role in supporting their child's learning journey. Here are a few key ways you can help:

- **Establish Routines:** Ensure your child has a consistent daily schedule that includes sufficient sleep, regular meals and dedicated time for homework and revision. A structured routine helps students stay focused and prepared for each school day.
- **Encourage Good Attendance and Punctuality:** Being present and on time each day is vital for academic progress. Please help your child establish habits of punctuality and resilience by reinforcing the importance of attending school regularly and on time.
- **Stay Engaged in Their Learning:** Take an interest in what your child is learning by asking about their subjects, assignments and goals. Encourage discussions about school and celebrate their progress, no matter how big or small.
- **Provide a Positive Study Environment:** A quiet, well-lit space for study can significantly enhance concentration and productivity. Where possible, limit distractions such as excessive screen time and create an environment that supports focused learning.
- **Connect with Teachers and School Staff :** Open communication with teachers is key to understanding your child's progress. Keep an eye out for parent-teacher meetings, progress (fortnightly) reports and other opportunities to engage with the school community.
- **Support Wellbeing & Balance:** While academic achievement is important, so is maintaining a healthy balance. Encourage your child to participate in extracurricular activities, sports and hobbies that bring them joy and personal growth.

The school roll continues to grow and we again exceeded all expectations with our Year 9 cohort at the highest it has been for many years. This growth is also reflected in other year levels and is a great reward for the extensive work that has gone on over the years. We are very proud of this significant growth as we continue to be the school of choice for our community. This growth allows us to increase the opportunities we can provide our young people and enhance their learning experiences. As our roll grows, we are able to appoint new staff members adding to the wealth of knowledge, passion, and dedication to our school whānau.

The quality of teaching and support at Glenfield College remains outstanding and we are committed to providing the best possible education and care for our students. As parents and caregivers, your trust

and support are invaluable and we thank you for being an integral part of this journey.

Exciting Developments at Glenfield College

As you may have noticed, exciting developments are underway on our campus. The refurbishment of B Block began over the summer, reaffirming our commitment to providing modern, world-class facilities for our students and staff. Additionally, planning continues for the much-anticipated gymnasium re-build, which will further enrich the opportunities available to our students. These projects symbolise our dedication to continuous improvement and excellence in education.

I want to take a moment to acknowledge and appreciate the collective effort in ensuring that our students started the year well-prepared. The pride in our uniform, the focus on attendance and punctuality and the readiness to learn, all contribute to the vibrant and positive culture we uphold at Glenfield College.

The year ahead is full of promise and we are ready to make 2025 a year of achievement, resilience, and success. Let's go forward with enthusiasm and determination—this is our time to shine!



Rakesh Govind
Principal

New Staff Welcomed



This term we welcome the following staff to our Glenfield College whānau:



Tania Draper - Year 9 Dean/Social Science

Kia ora,

Ko Tania Draper toku ingoa. I am Tania Draper and I am the new Year 9 Dean. I also teach Junior Social Studies and Senior Physical Education. I live out in the 'wild west' near Muriwai and have three children all at primary school. My husband also works in sport as a physiotherapist for both Blues Rugby and Emirates Team NZ. We recently spent four months in Barcelona with the Americas Cup team. In my spare time, I love riding our horses, trail running and spending as much time outside working on our lifestyle block.



Laurence Lopez - Technology

Kia ora! I'm Laurence Lopez, a new technology teacher specializing in engineering and automotive. I'm excited to help students build practical skills and work with my colleagues to create a positive and effective learning environment.

Terri Krippner - English

Although I grew up in Hamilton and lived in Germany for many years, I have since relocated to Auckland and taught English at ACG Parnell. I am passionate about helping students to find their own voice and



develop a sense of how language impacts us in our daily lives. When I can, I enjoy making music, watching films, and travelling. I am overjoyed to be joining the Glenfield College English Department this year.



I'm Alison Sun, a first-year teacher, teaching Maths and IT. I graduated from UoA as a Secondary School Teacher last year. I'm really excited to return to work here because I received a lot of help from this school last year when I was a student teacher. I am willing to offer my help to all students, supporting and guiding them to be good people who contribute to their families and the community.



Taylor Saunders - ESOL

Kia ora! My name is Taylor Saunders and I am Glenfield College's new ESOL teacher. I worked at James Cook High School for the previous three years where I taught mainstream English, and before that I did some teaching in Vietnam as well! I have quickly come to adore my new school, and I look forward to participating in camps, sports and any

competition.



Alex Willis - Technology

Kia ora! My name is Alex Willis. I will be teaching Design and Visual Communication, General Technology, and Art (from Term 3)! As a secondary student, DVC was by far my favourite subject. I am so excited that, after four years of studying Architecture and Teaching, I am able to pass down my knowledge and enthusiasm for the subject here at

Glenfield College!



Ethan Richards - Teacher Aide

I am very honoured to be a part of this great school. Previously, I worked as a Teacher Aide at Napier Boys' High School and I look forward to using my experience to help the students grow and reach their full potential.



Jennie Magracia - Teacher Aide

Hi, my name is Jennie Magracia. Back in the Philippines, I was a secondary school teacher and I came to New Zealand 10 years ago to study Computer Science. I worked in IT Admin, office and sales in the Automotive industry for eight years and I'm very happy to take up new challenges as a Teacher Aide at Glenfield College to help students in need.



Jo Cowell - Student Wellbeing Receptionist

I am excited to join GC as I have had a six-year relationship with the school as a parent of one past and one current student, so I know the school but I am learning the job! For the last eight years, I have worked as an office assistant at Glenfield Primary School. I am looking forward to helping the students and all the new challenges this role will bring!

International Students Welcomed



This week we welcomed 20 new international students from Japan. They were involved in a two-day orientation of the school which was held in the library. They got to know each other and met their kiwi buddies with help from our Cultural Prefects Arren, Mikaela and Kafoa.

Student Safety and the Staff Carpark

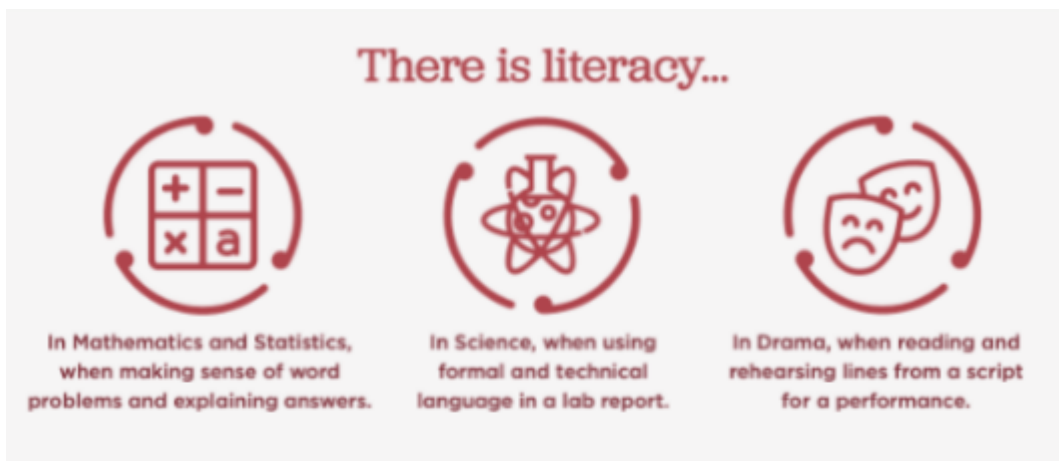
With large numbers of students exiting the school at the end of the day we need to ensure their safety around this very busy intersection.

The school gates will be closed between **2:30pm and 3.30pm each day** for all traffic.

All student pickups should be arranged outside the school and preferably away from the front entrance to the school.

If you require to pick up your child, please arrange for them to meet you at safe place outside the school grounds – there are several quiet side streets close by the school.

If you are exiting the school grounds before school and after school, we recommend that you turn left to ensure safety for all. The traffic congestion at peak times has become very hazardous and turning left and using the round-about to come back up the street is the safest option.



Literacy is the ability to read and write.

At Glenfield College, reading and writing are highly valued. Year 9 and 10 students are required to participate in Reading Plus twice a week during school time. Reading Plus is an online reading tool that provides targeted texts for students based on their reading levels. Students will be assessed at the beginning of the year and again at the end of the year.

It was disconcerting over the last few years to discover that 50% of our Year 9 students arrived at high school reading at 5 years or more below their grade level, however, after a year of regular, and consistent reading most of our Year 9s and 10s made gains in their reading levels.

The best thing parents and whānau can do for their children is to encourage them to read as often as

possible. The summer slide is a well-researched phenomenon that shows that students often lose any reading level gains they have made over the year.

As we start the new school year, please try to get your students to read: graphic novels, magazines, articles, and books - anything is better than nothing. Read an interesting article together, look up words you don't know, discuss new vocabulary, discuss the main idea of the article, find follow-up articles or articles that give a different perspective, and engage in conversation with your children about what you have read.

The Glenfield College library is a wonderful resource. Encourage your child to go to the school library to take out some books or take your child to the Glenfield Library in Bentley Ave and join the library.

Reading Plus will start again in a couple of weeks' time. Once your child has been given their login details and has completed the initial assessment, they will be able to do as much Reading Plus at home as they like. This programme builds students' confidence, comprehension, and fluency; important skills for reading and writing and necessary for all subjects.

Important Dates to Note

4 February - Class, ID and Prefects Photos

5 February - Sports sign-up

6 February - Waitangi Day - School Closed

7 February - School Closed

11 February - Clubs sign-up

11 February - Year 9 Whanāu Welcome Evening

13 February - Honours/Leadership Assembly - 1.30pm

14 February - Athletics Day

17-28 February - Services Academy - Induction Camp

18 & 19 February - Year 9 Hearing Tests

20 February - ID Photo catch-up

School Lunches

Glenfield College does not have a tuckshop onsite, however, students can order from a comprehensive menu at ezlunch and this will be delivered to the front reception. Please note that students are not permitted to get food delivered by any other means.



Order Lunches

new to ezlunch?

Quickly create an account to order lunch now.

1. Scan QR code to create a new account.
2. Enter your details to get started.
3. View the menus & click to add items to the cart.
4. Go to Checkout & pay.
5. Collect your lunch at 1.30pm from Quad Kitchen.



THANK YOU for your ezlunch order.

Curious to see what's on the menu? Go to <https://ezlunch.co.nz/schools> and search Glenfield College to view a sample menu. If you would like any help, please get in touch. 8am – 4pm weekdays 09 475 5287 0800 EZLUNCH hello@mykindo.co.nz

If a student doesn't have lunch then food is available from the wharekai at interval and lunchtime.

GLENFIELD
COLLEGE



INTERNATIONAL STUDENT HOST FAMILIES NEEDED **2025**

Kind and caring Glenfield
College families needed to
host Japanese girls from
Shinagawa High School!

Term 1, March 1st - 17th

\$380

per student per week

Single or double
placements
available

SHARE YOUR TIME
INTRODUCE KIWI CULTURE
CREATE LASTING MEMORIES

Please apply to host at
www.lpstudenthomestays.co.nz
or call (09) 836 1277





The 2024 Yearbook is available for purchase from the Finance Office or online payment for \$30.

School Communications

Please ensure we have up-to-date contact details. You can do this by updating them on the [Parent Portal](#), or by sending us an email admin@gc.ac.nz.

Please keep up to date with College events via our online calendar below. This will be updated as information comes to hand.

If you have any questions about our College communication, please feel free to contact me at admin@gc.ac.nz.



UPCOMING EVENTS

Click [here](#) to view
the school calendar

Sports Report

Happy New Year & welcome back for 2025 from the Glenfield College Sports Department!

Extra curricular sports will start rolling thick and fast over the next few weeks as we look to continue to grow our numbers of sporting teams, and the sport & recreation opportunities on offer here at GC.

Your opportunity to express interest in all sports for 2025 comes next week at Sports Sign-Up day on Wednesday, 5th February. Put your name down for as many as you think you'll be interested in, to ensure you get all the necessary information when those sports/events come around.

Lunchtime sports clubs such as table tennis, badminton, archery & fencing will be up and running over the next few weeks, with table tennis starting on Tuesday lunchtime in the Funky Chicken Room from the 4th of February. Also keep an eye out for Kaipatiki local badminton leagues as we have secured funding to run a league amongst the Kaipatiki Schools Group.

On the 14th February will be our whole school Athletics Day. Further information will follow, but this will be a chance to find any athletes who wish to compete at North Harbour Zones & Auckland Championship events, so be sure to let us know if this is you.

A quick and easy way for the Sports Department to get information out there is through our Instagram page, which you can find by scanning the QR Code below. However, any questions you may have about anything at all, just flick me an email at w.lacey@gc.ac.nz and I'll get back to you as soon as possible.



To follow @glenfieldcollegesport click below



To see the latest sports fixtures click below



School Docs Reviews

As previously notified, we use the services of SchoolDocs to manage our school policies, updating them to reflect current legislation.

- **Health, Safety & Welfare (Board)**
- **Safety Management System (Board)**
- **Risk Management (Board)**
- Worker Engagement, Participation and Representation
- **Healthcare (Board)**
- Reporting & Reporting Accidents, Injuries & Illness

To review, log on to the SchoolDocs website using:

<https://gc.schooldocs.co.nz/Logon.aspx?ReturnUrl=%2f>

Login: gc

Password: Kaipatiki



LEARNING HUB
课后补习

WHAT 内容

- 完成作业
- 找老师提问
- 向同学请教

WHEN 时间

- 周二和周四
- 放学后直到 4:30结束

WHERE 地点

- 图书馆

do you need help with...



understanding
on your own



homework
with others



assessments
with teachers

Learning Hub

School Library | Tues & Thur | 3.15pm - 4.30pm



Technology

INSITE

09 272 2676 / 0508 467 483
sales@insite.co.nz
www.insite.co.nz

Our families the opportunity to buy affordable secondhand or new BYOD laptops for you through Insite Technology, one of our technology suppliers.

They also have Windows laptops & pc computers, happy for referral of families or friends.

The device brands and models change as per availability. These come with a general warranty and charging adapter.

Contact Insite directly to discuss options via details below or view online.

- Mention your school name in order/query.



**Pricing per availability:
Refurbished Chromebook
From \$220+GST (\$255)**

**Will have some signs of previous use.*



Add on

1 YR WTY COVER

CONTACT US



09 272 2676 x763



Online Options:

www.Insite.co.nz



sales@insite.co.nz

new  zealand
COMMUNITY CHARITABLE TRUST

\$5 ENTRY Fee

A FUN COOKING COMPETITION FOR
10 - 19 YEAR OLDS

SPOT PRIZES

COOKING COMPETITION

SUNDAY FEBRUARY 23RD 2025
TAKAPUNA BEACH RESERVE

MORE INFO FROM
[EVENT.NZCCT@GMAIL.COM](mailto:event.nzcct@gmail.com)

SWEET OR SAVOURY ITEMS JUDGED ON THE DAY
DECORATED CUPCAKES JUDGED BY THE PUBLIC ONLINE

LINK TO ENTRY

FORM



Devonport-Takapuna
Local Board

THE LION
FOUNDATION

晋阳光能
T.K. SOLAR

wildbean

top 2go Motor Centre
48 Northcote Rd, Northcote

HAMMER
HARDWARE



AUCKLAND NORTH
COMMUNITY AND DEVELOPMENT

3C EASY

天天食品
DAILY FOODS

THANKS SO MUCH TO OUR SUPPORTERS:

Drowning
Prevention
Auckland

新南區中華會館有限公司
Fong Wo Yung Chinese Welfare Society

Auckland
Council

ASB
ONE STEP AHEAD

Genuinenz

life

新西蘭報
New Zealand Newspaper

Devonport
Timber

Everest
Coffee

華人头条
CHINESE HEADLINES

MILLEN

Catch 22

Various small logos

Various small logos



WEARING IS BELIEVING

UNIFORMS



NZU

Glenfield College Uniform Available from 'New Zealand Uniforms'

Store: 19A Douglas Alexander Pde, Albany

Phone: 09 477 6300

Email: albany@nzuniforms.com

Store Hours: Weekdays 9am – 5pm, Saturday 9am – 1pm

Web: www.nzuniforms.com

Payment Options:

NZ Uniforms accepts Cash, Eftpos, all major Credit Cards and WINZ payments. We also offer finance through Gilrose Finance, PartPay and have a 'Uniform Club' which is a great way to save for your School Uniform purchases.

'Uniform Club' :

It's easy, set up an account and make automatic payments (weekly, fortnightly or monthly) in advance and watch your balance grow. When you are ready to make your Schoolwear purchases with NZU, your money is already available and waiting to be spent! Call or visit the store today to get started.

